



File Name: bunn grx service manual.pdf

Size: 2734 KB

Type: PDF, ePub, eBook

Category: Book

Uploaded: 29 May 2019, 23:53 PM

Rating: 4.6/5 from 786 votes.

Status: AVAILABLE

Last checked: 16 Minutes ago!

In order to read or download bunn grx service manual ebook, you need to create a FREE account.

[Download Now!](#)

eBook includes PDF, ePub and Kindle version

[Register a free 1 month Trial Account.](#)

[Download as many books as you like \(Personal use\)](#)

[Cancel the membership at any time if not satisfied.](#)

[Join Over 80000 Happy Readers](#)

Book Descriptions:

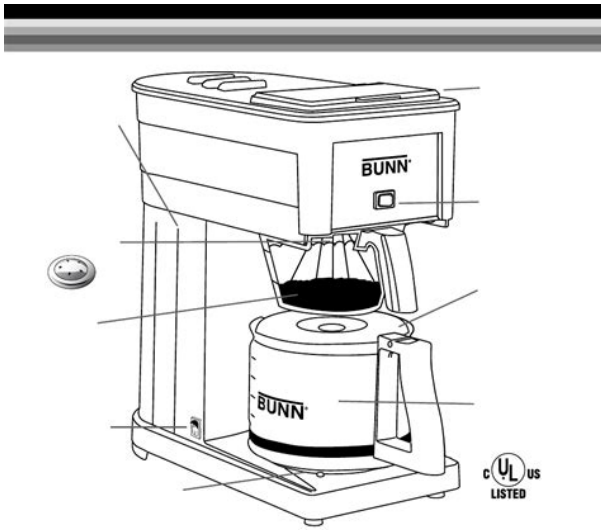
We have made it easy for you to find a PDF Ebooks without any digging. And by having access to our ebooks online or by storing it on your computer, you have convenient answers with bunn grx service manual . To get started finding bunn grx service manual , you are right to find our website which has a comprehensive collection of manuals listed.

Our library is the biggest of these that have literally hundreds of thousands of different products represented.



Book Descriptions:

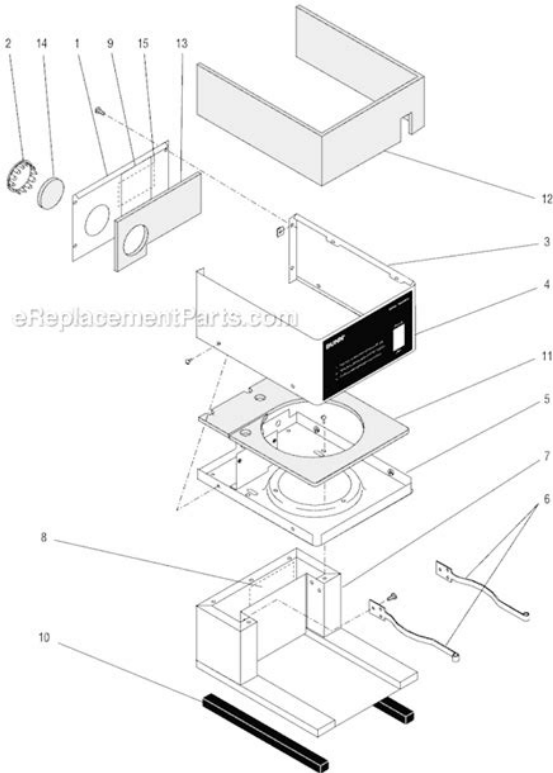
bunn grx service manual



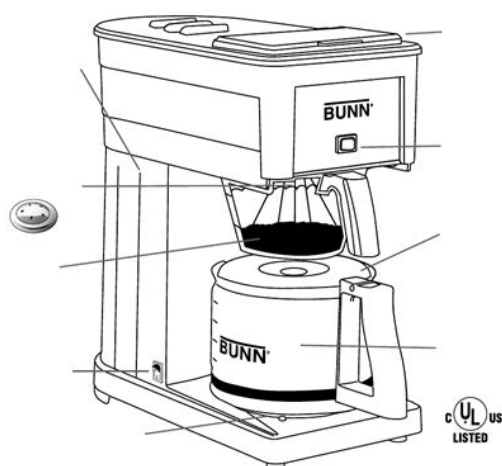
Shop Online and Parts Ship Today. Call us at 1800 4585593 Find Bunn manuals at Parts Town. Call 8004585593 Not to worry, partstown.com is ready to help. Please place this order and all future international orders there. You should have JavaScript enabled in your browser to utilize the functionality of the website Parts Town and 3Wire have joined forces and teamed up with IPC, combining the team you know with the largest inventory in the industry and cuttingedge technology to give you the absolute best experience. Things look a little different, thats true, but you are indeed in the right place. Hi there, welcome to Parts Town. Parts Town and 3Wire have joined forces and teamed up with NDCP, combining the team you know with the largest inventory in the industry and cuttingedge technology to give you the absolute best experience. Parts Town and 3Wire have joined forces and teamed up with SMS, combining the team you know with the largest inventory in the industry and cuttingedge technology to give you the absolute best experience. Hi there! RSCS and Parts Town have joined forces, combining the team you know with the largest inventory in the industry and cuttingedge technology to give you the absolute best experience. Parts Town and 3Wire Foodservice have joined forces. Now youll work with the great team you know, while having access to the largest inventory in the industry and cuttingedge technology. Lets go! Continue to Parts Town What You Can Expect Always Genuine OEM The Most InStock Parts on the Planet Breakthrough Innovations Exceptional Customer Experience Same Day Shipping Ready to get started. Lets go! Continue to Parts Town Looking for beverage equipment parts. Marmon Link is the new home for genuine OEM parts for the Marmon family of equipment manufacturers. Find beverage dispense parts and accessories, as well as parts for Cornelius, Prince Castle, Silver King, Angelo Po, and

Saber King units. Continue to Marmon Link Please try again. Please try again later.
<http://www.industra.sk/userfiles/dektec-streamxpress-manual.xml>

- **bunn grx service manual, bunn grx service manual pdf, bunn grx service manual download, bunn grx service manual 2017, bunn grx service manual 2016.**



Whether its a cover, switch or Oring, genuine OEM components and attachments are made to fit and function with your exact piece of equipment. Dont let a broken machine stop you from brewing hot coffee or making icy drinks. Find the right Bunn commercial parts for major repairs or daytoday upkeep. They make a wide variety of equipment like Each component is durable, so your coffee maker runs smoothly every day. Have other beverage equipment. Choose from a wide selection of Bunn slush machine parts, tea dispenser accessories and more for your unit. That's why Parts Town offers same day shipping on instock replacement parts until 9 PM ET MondayFriday and all online orders until 4 PM ET Saturday. We also have a large collection of Bunn manuals and diagrams. Check out everything from maintenance advice to Bunn parts lists all in one easy place. Please try again later. No worries, it's really easy. No need to remember another username, you will now use your email address. Its listed below. Once logged in you can view pricing and order these parts. OK Please try again. Always Available free backorder shipping applies to UPS Ground shipments only. Excludes international orders, UPS Freight orders, consolidated shipments, factory drop ship orders, and ship complete orders. Program details subject to change at any time. No need to type it all again. That just makes things WAY easier. Plus, youll be able to access any discounts or contract pricing that may be available to you. Thats important. The real question is, why wouldnt you log in Everybody loves cookies. Okay, theyre not those kind of cookies, but theyre still great. To drain your brewer, use the following procudure When water has stopped Repeat this process and set the Some water may ow Continue tipping the brewer until the ow stops. We would like to share with you the steps BUNN is taking to continue providing you the beverage equipment and equipment service your business required. Read our full statement.
<http://safe-international.com/userfiles/dektak-profilometer-manual.xml>



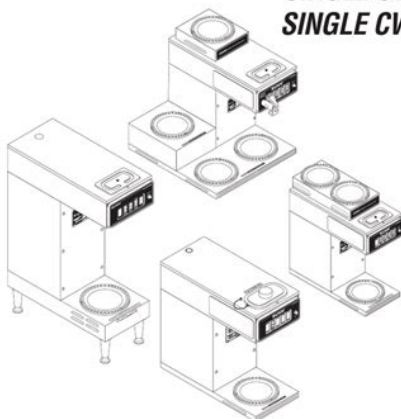
They do not represent the opinions of YourDictionary.com. Mentioned In whangdoodle Nearby Words bunkum bunkums bunky bunless bunn bunned bunnet bunnets bunnia bunniah. Please check your inbox, and if you can't find it, check your spam folder to make sure it didnt end up there. Please also check your spam folder. Bunn warrants that the equipment manufactured by it will be commercially free of defects in material and workmanship existing at the time of manufacture and appearing within the applicable warranty period. This warranty does not apply to any equipment, component or part that was not manufactured by Bunn or that, in Bunn's judgement, has been affected by misuse, neglect, alteration, improper installation or operation, improper maintenance or repair, non periodic cleaning and descaling, equipment failures related to poor water quality, damage or casualty. In addition, the warranty does not apply to replacement of items subject to normal use including but not limited to user replaceable parts such as seals and gaskets. This warranty is conditioned on the Buyer 1 giving Bunn prompt notice of any claim to be made under this warranty by telephone at 905 8412866 or by writing to 280 Industrial Parkway South, Aurora, Ontario, L4G 3T9. 2 if requested by Bunn, shipping the defective equipment prepaid to an authorized Bunn service location; and 3 receiving prior authorization from Bunn that the defective equipment is under warranty. Accordingly, statements by such individuals, whether oral or written, do not constitute warranties and should not be relied upon. All labels on the equipment should be kept in good condition. Replace any unreadable or damaged labels. U s e a n d C a r e M a n u a l N o t h i n g b r e w s l i k e a B U N N. 1 2 3. 15 Summary of content 15 pages Page 1 Use and Care Manual Nothing brews like a BUNN. This brewer has an attached, 3prong grounded cord set and requires 2wire service with ground, rated 120 volts AC, 7 amps, single phase, 60 Hz.

Components include an 800watt tank heater and a 34watt tank "keep warm" heater and 46watt decanter warmer; 900watts total. Page 3 Welcome Thank you for purchasing a BUNN home brewer. Do not touch hot surfaces. Use handles. Do not place cord, plugs, or brewer in water or liquid. Close supervision is necessary when the brewer is used by or near children. Unplug from outlet when not

in use for extended periods of time and before cleaning. Page 5 Improper set up will result in permanent damage and void the limited warranty. Page 6 Initial Set Up Guide 4 6 8 10 B U N N
IMPORTANT Brewer is NOT ready to plug in until you have followed the steps below. We recommend 1 heaping Tbsp. 14.2 g of drip grind per cup of coffee. N N BU WAR MER OFF 10 6 8 10
 B U N N ON 4 OFF O N 8 6 4 3. Slide the brew funnel into funnel guides and open lid. BUN N N N
 BU N N BU ER OFF WARM ER OFF WARM ON ON U B N N R OFF WARME ON 10 OFF 8 4 BUN N
 4. Page 8 Better Brewing BUNN home brewers are made to do exactly what BUNN commercial brewers do produce great tasting coffee quickly, simply and consistently. Cup after avorful cup, year after year, nothing brews like a BUNN. The Patented BUNN Brewing Difference Perfect coffee avor is robust without bitterness and is determined by three elements water temperature, the time ground coffee is exposed to the water and how much of the coffee is exposed to the water. Page 10 **CLEANING INSTRUCTIONS** Daily washing and cleaning of the brew funnel and decanter after each use is required. Occasionally, wipe the outside of the brewer, including the area above the funnel, with mild, no citrus added dish soap and a damp cloth. The brew funnel and decanter are top rack dishwasher safe. Please see page 9 for instructions on cleaning your thermal carafe. **DELIMING** You should delime your BUNN brewer to clear any deposits that may have accumulated due to impurities in the water source.

BUNN®

*C, CT, CTF,
 CWT, CWTF,
 SINGLE CW,
 SINGLE CWF*



OPERATING & SERVICE MANUAL

BUNN-O-MATIC CORPORATION

POST OFFICE BOX 3227
 SPRINGFIELD, ILLINOIS 62708-3227
 PHONE: (217) 529-6601 FAX: (217) 529-6644

10841.0000F 02/03 ©1996 Bunn-O-Matic Corporation

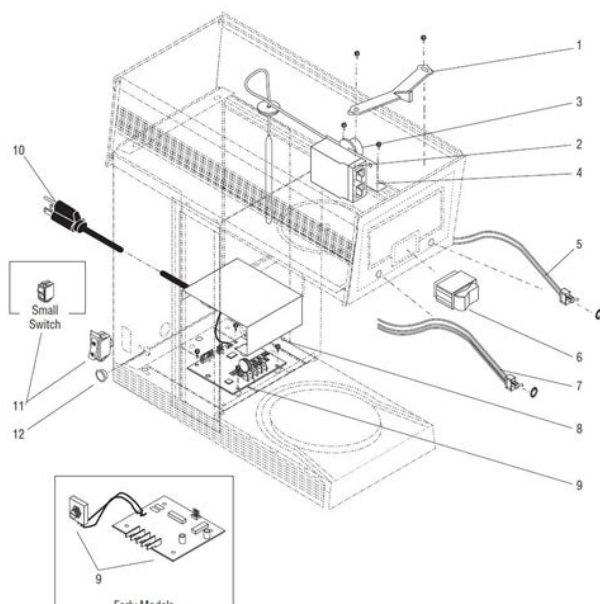
www.bunnomatic.com

<http://www.bouwdata.net/evenement/3gx-mrs-manual>

Page 11 While cleaning your brewer, don't forget to check your glass decanter If loose, use a standard screwdriver to tighten. handle. FlavorGard valve THERMAL CARAFE ROUTINE
CLEANING BTX model may be disassembled for cleaning. Rotate the lid The carafe Occasionally, the FlavorGard.Lift at the edge and pull up. Page 12 **DRAINING YOUR BREWER** The water in your BUNN coffee brewer should be emptied whenever it is taken on a trip, shipped, stored in an unheated location with a chance of freezing, or goes unused for a extended period of time. To drain your brewer, use the following procudure 1. Unplug the brewer. Remove the brew funnel and sprayhead from the brewer and set them aside. 2. Cool the brewer by pouring a full decanter of fresh, cold water into the top of the brewer. BeverageAir BevLes, Inc. IceOMatic IMI Cornelius, Inc.

Montague Moyer Diebel Nemco, Inc. Newco Enterprises, Inc. APW Wyott Atlas Metal Industries AutoFry Automated Equipment LLC AyrKing Corporation Bakers Aid Bakers Pride Belshaw Brothers Berkel Bettcher Industries, Inc. Miroil Moffat, Inc. Montague Moyer Diebel Mr. Induction Nemco, Inc. Newco Enterprises, Inc. We Can Help! 800.837.8327 We Can Help! 800.837.8327 Bunn began manufacturing coffee making equipment for commercial kitchens and restaurants in 1957. Today, the Bunn product line includes coffee makers and grinders, tea brewers, thermal carafes, and other coffee maker parts and accessories. Strong enough to handle the needs of a popular coffee shop and affordable enough to serve a small town diner, Bunn's brewers are made with high quality parts and materials. It's no wonder so many Ohio dining establishments have Bunn coffee machines in their kitchens. These same businesses know that even the best machines need regular cleaning and maintenance. Round the clock use, improper handling, and lack of cleaning can cause parts to wear down and malfunction. That's where we come in.

<http://foscam-ng.com/images/boston-acoustics-gt-50-manual.pdf>



CPS Ohio is trusted as a BunnOMatic OEM replacement parts provider. Our replacement parts are certified by the manufacturer and are always guaranteed to fit. Our inventory of BunnOMatic OEM parts includes everything from warming elements to replacement faucet springs. In addition to our extensive parts inventory, as our name implies, we also employ an expert team of service technicians that can respond to requests from customers across a large geographic area. If your Bunn coffee machine is experiencing problems, our team will personally visit your establishment and fix them on the spot. Our technicians are well trained and have decades of combined experience working with Bunn products. We also only use certified Bunn replacement parts that are exact matches to the parts on the machine. After all, over 98% of the beverage is water. If your water contains excessive amounts of sediment, taste or odors, we recommend installing a water conditioner and requesting a flow restrictor sprayhead. Your BUNN brewer is designed to remain plugged in at all times, except during initial set up, when cleaning or if it will not be in use for three or more days. Did you know Sabia Usted sabe Did you know Now Sabia Usted sabe. You have seen BUNN recommends you AVOID 10 CLEANING INSTRUCTIONS 12 AUTHORIZED SERVICE BUNN Accessories 13 Troubleshooting 14 LIMITED WARRANTY 15 Maintenance Cleaning Record. Using the online preview, you can quickly view the contents and go to the page where you will find the solution to your problem with Bunn Coffee Maker GRX. To start viewing the user manual Bunn Coffee Maker GRX on full screen, use the button Fullscreen. However, if you do not want to take up

too much of your disk space, you can always download it in the future from ManualsBase. The option to print the manual has also been provided, and you can use it by clicking the link above Print the manual.

<http://acktivities.com/images/boston-acoustics-hps-8wi-manual.pdf>



You do not have to print the entire manual Bunn Coffee Maker GRX but the selected pages only. paper. If you want to quickly view the content of pages found on the following pages of the manual, you can use them. This brewer has an attached, 3prong grounded cord set and requires 2wire service with ground, rated 120 volts AC, 7 amps, single phase, 60 Hz. Components include an 800watt tank heater and a 34watt tank "keep warm" heater and 46watt decanter warmer; 900watts total. 3 1 3 Dimensions Table of Contents Important Safeguards.2 General Information.3 Hot Water.Safety features that are designed into the BUNN coffee brSwivel or lift brewer lid and pour water into brewer. Position decanter on base below funnel. Close the lid and wait three minutes while the internal tank partially fills. 3. Open the lid. Remove decanter and fill with cold wateCup after flavorful cup, year after year, nothing brews like a BUNN. The BUNN Brewing Difference Perfect coffee flavor is robust without bitterness and is determined by three elements water temperature, the time ground coffee is exposed to the water and how much of the coffee is exposed to the water. TEMPERATURE The reaOccasionally, wipe the outside of the brewer, including the area above the funnel, with mild, no citrus added dish soap and a damp cloth. DELIMING You should delime your BUNN brewer to clear any deposits that may have accumulated due to impurities in the water Place decanter on the base plate and close the lid. When water has stopped flowing from the brewer, empty the decanter. Repeat this process and set the decanter aside. 7. Grasp the back of the brewer and turn it upside down over a sink. Most of the water in the tank will flow from the sprayhead tube opening. Some water may flow from the area around the top lid. Continue tTo drain your brewer, use the following procudure 1. Unplug the brewer. Remove the brew funnel and sprayhead from the brewer and set them aside. 2.

Cool the brewer by pouring a full decanter of fresh, cold water into the top of the brewer. Place

decanter on the base platRegistrar las fechas del desincrustamiento o limpieza periodica que se ha hecho a la cafetera.

<https://lakecountyoralsurgery.com/wp-content/plugins/formcraft/file-upload/server/content/files/1626d27e6a4aed---case-580se-parts-manual.pdf>

<https://www.interactivelearnings.com/forum/selenium-using-c/topic/13363/3gx-mrs-manual>