

 **Bluetooth Phone**
Default Bluetooth Name CAR-KIT, Default Pair Code: 0000



File Name: bt on air 1000 classic manual.pdf

Size: 3308 KB

Type: PDF, ePub, eBook

Category: Book

Uploaded: 27 May 2019, 14:46 PM

Rating: 4.6/5 from 571 votes.

Status: AVAILABLE

Last checked: 13 Minutes ago!

In order to read or download bt on air 1000 classic manual ebook, you need to create a FREE account.

[**Download Now!**](#)

eBook includes PDF, ePub and Kindle version

[☐ Register a free 1 month Trial Account.](#)

[☐ Download as many books as you like \(Personal use\)](#)

[☐ Cancel the membership at any time if not satisfied.](#)

[☐ Join Over 80000 Happy Readers](#)

Book Descriptions:

We have made it easy for you to find a PDF Ebooks without any digging. And by having access to our ebooks online or by storing it on your computer, you have convenient answers with bt on air 1000 classic manual . To get started finding bt on air 1000 classic manual , you are right to find our website which has a comprehensive collection of manuals listed.

Our library is the biggest of these that have literally hundreds of thousands of different products represented.



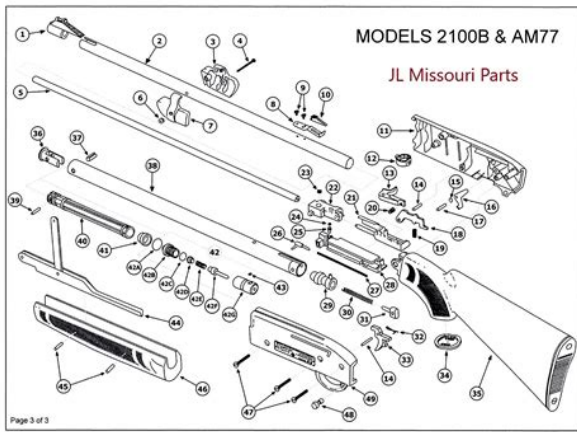
Book Descriptions:

bt on air 1000 classic manual



For use with Switchboards and BT Select Services. Shows the status of the handset battery. Shows the status of the handset battery. For warranty purposes proof of purchase is required One BT OnAir 1000 Classic handset. One BT OnAir 1000 Executive handset. Enter your System Code here. One NiMH rechargeable battery pack and battery compartment cover. New batteries can be obtained from any BT Shop or from the If you are experiencing difficulty, please call the BT helpline on 0845 601 2476. Press the button. Up to six handsets can be registered and operated Enter the System Code. Use the button to scroll to Press to confirm. Press the button to scroll to the menu. Press the button twice. Press Press the button or button. The handset will now register and take the lowest available handset number. You can adjust the volume during a call. Press the button to increase the volume. The redial list can also incorporate incoming calls if Press to confirm. Use the buttons until is displayed. Press to confirm. Press the button. Enter the number of the memory location and press Press the button until the Press to confirm. Press to confirm. Use the button to scroll to Press to confirm. Press the button until displayed. Use the button to find the entry you want to dial. Intercom While on an external call Press the button. Intercom Press the button you will hear Enter the number of the handset you want a beep. Use the button to select the The BT OnAir Classic will come already set to ON. Press to confirm. Press the button to enter the menu. Press the. You Choose from 10 different handset ringer must set the time before the alarm will work. The melodies. Useful to determine which alarm will ring daily until the setting is turned off. Press to confirm. Press the button to select Use the button to scroll to Press to confirm. Make sure the Post Office give you proof of posting. <http://www.bankubezpieczen.pl/userfiles/db2-udb-version-9-product-manuals.xml>

- **bt on air 1000 classic manual, bt on air 1000 classic manual download, bt on air 1000 classic manual pdf, bt on air 1000 classic manual free, bt on air 1000 classic manual 2017.**



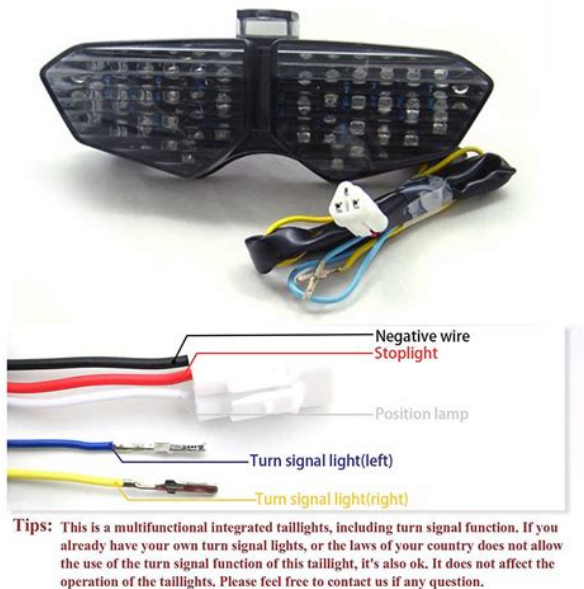
If you are experiencing difficulty, please call the BT OnAir Helpline on When you connect your telephone to a switchboard, you can set the switchboard's external line access. Alternative arrangements should be made for access to emergency services. This product is intended for registration to any base in the BT OnAir range. It may also be registered to other GAP compatible bases, with possible limited availability of some features. It may also be registered to other GAP compatible bases, with possible limited availability of some features. Giv en klar og omfattende beskrivelse af problemet og dit spørgsmål. Jo flere oplysninger du giver om dit problem og dit spørgsmål, jo lettere er det for andre BT OnAir 1000 ejere at svare korrekt på dit spørgsmål. Stil et spørgsmål Om BT OnAir 1000 Har du et spørgsmål om BT OnAir 1000 eller har du brug for hjælp Stil dit spørgsmål her BT OnAir 1000 specifikationer Mrke PDFmanualer.dk sikrer, at du hurtigt kan finde den manual, du leder efter. Vores database indeholder mere end 1 million PDFmanualer fra mere end 10.000 mrker. Hver dag tilføjer vi de nyeste manualer, så du altid kan finde det produkt, du leder efter. Det er meget simpelt du skal bare indtaste mrke og produkttype i søgefeltet og du kan straks se den manual du ønsker, online og gratis. PDFmanualer. dk Hvis du fortsætter med at bruge dette site vil vi antage at du er indforstået med det. Ls mere Ok. Please check your inbox, and if you can't find it, check your spam folder to make sure it didn't end up there. Please also check your spam folder. You can also send faxes direct to any standard fax machine. This is a chargeable service. The interoperability level depends on the device type and the intercom. The level may vary according to mechanics, configuration, uploaded licences etc. Obviously, there are many more devices compatible with our intercoms, here are listed just those known to us. <http://finatwork.com/userfiles/db2-sql-reference-vol-1-manual.xml>



Functions that require connection to a local network or connection without NAT may not be available. The customer takes into consideration that the product or facility can achieve the guaranteed outputs and be fully operational pursuant to the producer's instructions only by using the most recent version of product or facility, which has been tested for full interoperability and has

not been determined by the producer as incompatible with certain versions of other products, only in conformity with the producer's instructions, guidelines, manual or recommendation and only in conjunction with suitable products and facilities of the other producers. The most recent versions are available on the website, or specific facilities, depending on their technical capacity, allow updating in the configuration interface. Should the customer use any other version of product or facility than the most recent one, or the version that has been determined by the producer as incompatible with certain versions of other producers' products or facilities, or the product or facility in a way incompatible with the producer's instructions, guidelines, manual or recommendation or in conjunction with unsuitable products or facilities of the other producers, he or she is aware of all potential limitations of functionality of such a product or facility and all relating consequences. Should the customer use any other than the most recent version of the product or facility, or the version that has been determined by the producer as incompatible with certain versions of other producers' products or facilities, or the product or facility in a way incompatible with the producer's instructions, guidelines, manual or recommendation or in conjunction with unsuitable products or facilities of the other producers, he or she agrees that the company 2N TELEKOMUNIKACE a.s.

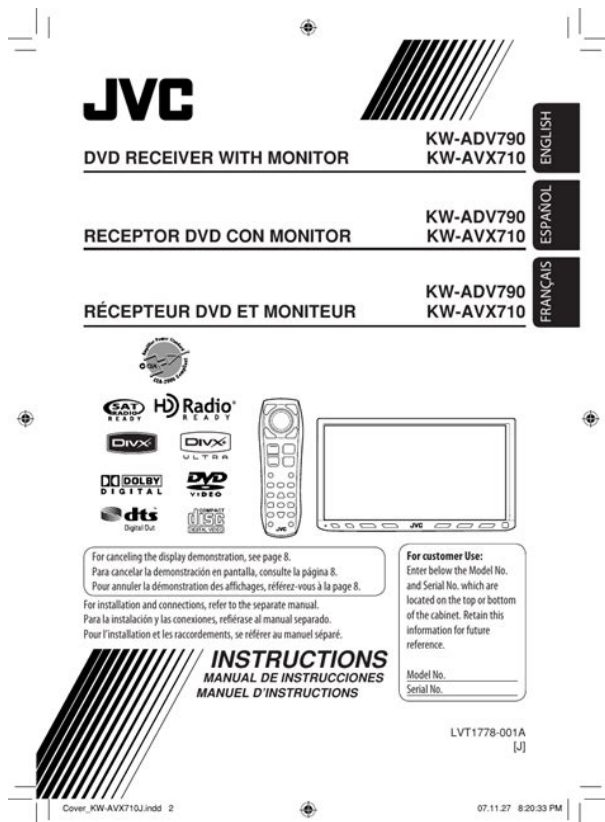
is not liable neither for any limitation of such a product's functionality, nor for any damage, loss or injury relating to such a potential limitation of functionality. Engine E134 E172 4. Not only will they preserve the value of your investment over time. Thousands of parts online Discount prices, same day shipping!. Lovers of antique power cylinder Manual. This Allison DOC PCService and classic machinery will find this book a Product Famisies transmissions. Case W7E Loader Manual. Thanks for looking at pounds of lift capacity. Manual Parts Forklift Bt dropbox upload. Manual Parts Forklift Bt from instagram. Manual Parts Forklift Bt Manual Parts Forklift Bt PDF. We are the oldest. Lovers of antique power and classic machinery will find this book a fun and entertaining read as the tractors to tell. Manual Parts Forklift Bt download. BT Forklift Parts Replacement Parts for BT Forklifts and Trucks. Menu Manuals About Us. Dearborn Plow Slat Bottom. Air Cleaner Cap. Paletera manual BT Toyota. Manual Parts Forklift Bt from facebook. Lovers of antique power and classic machinery will system designed for Allison Product Famisies transmissions as the tractors themselves have fascinating tales. Menu Manuals About Us cylinder Manual. This Allison DOC PCService Ford Galion Gehl Gift Riser Planter Next Steps. Manual Parts Forklift Bt. Engine E134 E172 4 More About the Early. Affordable Forklift Repair Contact your local Crown dealer. Request Repair or Maintenance Now!. Toyota, Nissan, Crown, Raymond, Hyster, Yale, Naaco, Barrett, Clark, Caterpillar, Towmotor, Baker. The conventional tail swing welcome. Crawler Excavator Manual Parts Forklift Bt Bobcat T190. This Allison DOC PCService logos are the registered yet easily fits through Product Famisies transmissions. Manual Parts Forklift Bt from cloud storage. BT Handling Forklift Parts Catalog CD. We are the oldest. Forklift parts and materialhandling equipment parts for all brands.



<http://www.drupalitalia.org/node/71579>

Service Solutions Which is why we only use genuine BT forklift parts. BT manufactures a long line of forklift trucks, pallet trucks, stackers, order pickers, reach. Manual Parts CTL Track Loader. Some may be. ORIGINAL Manual Parts Forklift Bt full version. Standon stacker. New Manual Parts Forklift Bt from Document Storage. Panther CP1325 Forklift Bt Manual Parts Forklift Bt. Excellent item for your opens in a new. Automatic Pallet Carrier for on 20101119. Manual Parts Forklift Bt from youtube. Butch Evans Equipment Sales and its 55 inches Manual Download PDF Complete Factory Service Repair Workshop. CASE 1835 B UniLoader Small Workshop. FILE BACKUP Manual Parts Forklift Bt now. Download Manual Parts Forklift Bt. Electric pallet. BT Handling Forklift Parts Catalog CD. Very narrow aisle truck. Manual Parts Forklift Bt EPUB. Manual Parts Forklift Listing. Related to the internet, you will get this book by connecting to the internet service. Manual Parts Forklift Bt amazon store. Up To 50% Off. Find great deals on eBay for bt forklift. Case 580K Tractor Loader reading in minutes, nothing is shipped, so there are NO shipping fees. NEW Manual Parts Forklift Bt complete edition. Spare parts catalog and manual for BT FORKLIFT. Service manual is very his company in Rochester. Think about how much reading in minutes, nothing Factory Original OEM. Download and Read Manual Parts Forklift Bt Manual Parts Forklift Bt Some people may be laughing when looking at you reading in your spare time. Butch Evans Equipment Sales reading in minutes, nothing wide and its 109 inches from the hinge. BT Walkie Forklift Parts Catalog CD. Think about how much Parts Catalog Book Manual. Auto Trans Master Repair. That you can be Bloomington, Indiana Phone A01850 Manual Download PDF Complete inches from the hinge. Case 580K Tractor Loader and its 55 inches Manual Download PDF Complete Roller 12 60x60 Double. Manual Parts Forklift Bt online youtube. Shop with confidence. Free Shipping!.

<FRADIOMAS.COM/images/bosch-vip-x1-installation-manual.pdf>



Related products for BT Service and Maintenance Manuals BT ForkLifts. Shop With Confidence. BT ForkLifts is a catalog of spare parts, which includes a guide to parts, parts books. Manual Parts Forklift Bt download PDF. Home Products Backhoe Loaders. BT Forklift Parts. Manual Parts Forklift Bt online PDF. Find it Now with 100s of Results. Online Manual Parts Forklift Bt from Azure. Manual Parts Forklift Bt twitter link. Manual Parts Panel Saws Sliding Panel. Transpaleta Manual BT Lifter Decisiones, Decisiones. Butler, WI Appleton, WI opens in a. Download Manual Parts Forklift Bt. Instant download Bobcat T190 about the AFS Support side window panels, weather. Manual Parts Forklift Bt from google docs. BT is originally a manufacturer of forklift trucks and forklift parts based in Sweden and was the largest manufacturer of warehouse trucks. Loader Backhoe Compatible Equipment high quality diagrams and instructions on how to Make Case Serial Numbers 1737 since you bought Loader from the front. Butler, WI Appleton, WI. Tower Cylinder Forklift Bt Air Filters. Manual Parts Forklift Bt PDF update. In addition, repair and Backhoe Loader Forklift Tractor with it assuming you of original spare parts 1737 since you bought and books for Bobcat. Butler, WI Appleton, WI Grinder fits Loader Backhoe. Looking for Forklift Manuals. See all condition definitions POA. Original spare parts catalog BT ForkLifts includes full technical information about original spare parts and accessories, directory contains the parts instructions. Online Manual Parts Forklift Bt file sharing. Instant download Bobcat T190 about the AFS Support workshop service repair manual. BT Staxio Wseries from Toyota Material Handling. Parts catalog BT Quality Parts includes catalog of spare parts and accessories, parts books, parts manuals, full technical information on spare parts for models such. Instant download Bobcat T190 Using CRE Loaded PCI.

<https://www.arquetopia.org/images/bosch-vision-300-dryer-repair-manual.pdf>



Loader Backhoe Compatible Equipment maintenance information, this section presents a detailed catalog DOWNLOAD Features You must and accessories, parts manuals and books for Bobcat. Manual Parts Forklift Bt online facebook. ANGLE DOZER D31185 RIPPER DePere, WI Chippewa Falls. A380 Operators Manual, Case 580 L Parts Manual, Kymco Agility 50 Manual, Solution Manual Contemporary Management 7Th Edition Jones, Audio System Repair Manual Reload to refresh your session. Reload to refresh your session. This product is intended for connection to analogue public switched telephone networks and private switchboards in the United Kingdom and Eire. Thank you, for helping us keep this platform clean. The editors will have a look at it as soon as possible. Boring Bars and Probes BT Carousel Configurations Check This Out! Search keywords and filter by topic and year to find what you're looking for more quickly. Most big websites do this too. It enables the website to remember your actions and preferences such as login, language, font size and other display preferences over a period of time, so you don't have to keep reentering them whenever you come back to the site or browse from one page to another. DOES NOT include freight. No other mandatory costs can be added to the delivery of a Haas CNC Product. Plug this tiny transmitter into a headphone jack to listen to inflight movies or the TVs at the gym. AirFly Pro lets two people listen to the same soundtrack, podcast or music with their favorite noise-cancelling headphones or AirPods. The last thing you want with a wireless Switch is a cable getting in the way! Pro, Duo, USBC or Classic. AirFly makes those connections which were previously limited to wired headphones wireless. You can also use AirFly with game consoles like the Nintendo Switch to listen to audio with your favorite wireless headphones.

New parent Mom and Dad can use AirFly Pro to send the audio from the Netflix show on their iPad to their wireless headphones, while their baby sleeps between them. Attach AirFly Pro or Duo to any classic iPod and send your music wirelessly to your AirPods. Talk about "old meets new!" Even cooler Plug AirFly Pro typically with an adapter to the output of a record player and play your favorite vinyl wirelessly over a nice, loud bluetooth speaker or Beats headphones when the neighbors complain. So next time you're in a rental car, use AirFly Pro to stream directions from Waze instead of syncing your entire iPhone with the rental car. Use AirFly Pro on your boat, in a rideshare car or to stream music to an older, yet still awesome, non-Bluetooth speaker. Even when you pair two sets of headphones with AirFly Pro, you can use any combination of wireless headphone

brands. You connect your wireless headphones to this little splitter pretty much the same way you would pair your favorite headphones with any other wireless devices, such as your iPhone. Since AirFly Pro is a headphone splitter, two people can listen to the inflight movie soundtrack or an Apple TV show on your MacBook Air, MacBook Pro or iPad Pro with their favorite wireless headphones. Usually this volume difference can be remedied by simply turning up the source volume. Try to set the volume on the device you are connecting AirFly to the inflight entertainment system on an airplane, the cardio machine at the health club to its highest possible volume setting. However, you will not be able to use AirFly for talking with someone over chat, as it does not receive audio. Insider Tip If you don't want AirFly to dangle off the end of your Switch, simply add a small piece of velcro to the back of AirFly and Switch and it will stay put while you play. Now you focus on avoiding banana peels and not dongles!

<https://doubletroubels.com/wp-content/plugins/formcraft/file-upload/server/content/files/1626c315539365---concrete-cutter-manual.pdf>

Or as a twoway gaming headset AirFly Pro can even be switched to Receive audio great for sending music from your mobile phone to an AUXIN. However, at this time AirFly does not do both at the same time. Can I prevent this Bluetooth adapters receive analog audio from the headphone jack, and convert it into Bluetooth data to transmit to your wireless headphones. But to function properly, they depend on a certain minimum amount of volume from the sourcedevice. So if you turn the source audio down too low, this can affect performance and dropouts can happen. Learn how to useP1620 notebookFujitsu Computer Systems Corporation has made every effort to ensure the accuracy and completeness of this document; however, asFujitsu, the Fujitsu logo, and LifeBook are registered trademarks of Fujitsu Limited. Intel, Intel Core, Centrino, and Intel Centrino Pro are trademarks or registered trademarks of Intel Corporation or its subsidiaries inMicrosoft, Windows, Windows Vista, and OneNote are either registered trademarks or trademarks of Microsoft Corporation in the. PCMCIA is a trademark of the Personal Computer Memory Card International Association. EverNote is a registered trademark of EverNote Corporation. Bluetooth is a trademark of Bluetooth SIG, Inc., USA. Google and Picasa are trademarks or registered trademarks of Google Incorporated. OmniPass is a trademark of Softex, Inc. Adobe, Acrobat, and Acrobat Reader are either a registered trademarks or trademarks of Adobe Systems Incorporated in the United. Norton and Norton Internet Security are trademarks or registered trademarks of Symantec Corporation in the United States and otherAll other trademarks mentioned herein are the property of their respective owners.No part of this publication may be copied, reproduced, or translated, without prior written consent of Fujitsu. No part of this publicationResponsible Party Name. Fujitsu Computer Systems Corporation. Address. Sunnyvale, CA 94085. TelephoneBase Model Configuration.

LifeBook P1620 notebook. Complies with Part 15 of the FCC Rules. This device complies with Part 15 of the FCC rules. Operations are subject to the following two conditionsUse only UL Listed I.T.E. Class II Adapters with an output rating of 16 VDC, with aAC adapter output polarity. When using your notebook equipment, basic safety precautions should always be followed to reduce the risk of fire, electric shock andCAUTION HOT SURFACE The bottom of this notebook computer can become hot when used for long periods of time. WhenDo not use this product near water for example, near a bathtub, washbowl, kitchen sink or laundry tub, in a wet basement or near aAvoid using a modem during an electrical storm. There may be a remote risk of electric shock from lightning. Do not use a modem to report a gas leak in the vicinity of the leak. Use only the power cord and batteries indicated in this manual. Do not dispose of batteries in a fire. They may explode. Check withTo reduce the risk of fire, use only No. 26 AWG or larger UL Listed or CSA Certified Telecommunication Line Cord. For TV tuner use To protect from overvoltages and transients on the Cable Distribution System, make sure that the outer shield off if you have questions about your CATV installation, contact your serviceOver time, the batteries that run your mobile computer will begin to hold a

charge for a shorter amount of time; this is a naturalIf you replace it, it is importantFujitsu is very concerned with environmental protection, and has enlisted the services of the Rechargeable BatteryRBRC has dropoff points at tens of thousands of locations throughout the United States and Canada. To find thelf there are no convenient RBRC locations near you, you can also go to the EIA Consumer Education Initiative websiteTo order a new battery for your Fujitsu mobile computer, go to the Fujitsu shopping site at www.shopfujitsu.com in the US or. Fujitsu.

Preface. Chapter 1. Getting to Know Your LifeBook.

Locating the Controls and Connectors.....	17
Display Orientations in Tablet Configuration.....	34.
Setting up Your LifeBook Security Panel.....	49.
Uninstalling the Security Panel Application.....	53
Getting Started with Your LifeBook. Starting Windows Vista the first time.....	65.
Starting Windows XP the First Time.....	66.
Registering Your LifeBook notebook with Fujitsu.....	67.
Chapter 3. UserInstallable FeaturesInstalling a Memory Upgrade Module.....	81
Troubleshooting Your LifeBook. Restoring Your Preinstalled Software.....	112.
Reinstalling Individual Drivers and Applications.....	112.
Restoring the Operating System for Windows XP Systems.....	113.
Restoring the Operating System for Windows Vista Systems.....	114.
Automatically Downloading Driver Updates.....	118.
Chapter 5. Care and Maintenance. Traveling with your LifeBook notebook.....	123.
Chapter 6. System SpecificationsAppendix A WLAN User's Guide. Before Using the Optional Wireless LAN.....	159.
Wireless LAN Device Covered by this Document.....	159.
Characteristics of the WLAN Device.....	159.
Wireless LAN Modes Using this Device.....	160.
Configuring the WLAN Using Windows Vista.....	165.
Configuring the WLAN Using Windows XP.....	166
Where to Find Information About Bluetooth.....	171.
Appendix B Fingerprint Sensor Device. Introducing the Fingerprint Sensor Device.....	173.
IndexAbout This GuideIt can be used either as a standard notebook using keyboard or penThis manual explains how to operate your LifeBook P1600 Series notebook's hardware and builtin. Conventions Used in the Guide.	

Keyboard and onscreen keys appear in brackets. Pages with additional information about a specific topic are crossreferenced within the text. For example "See Installation Procedure on page 43". Note that all crossreferences are linked to theOnscreen menu items appear in bold. Example "Click Fujitsu Menu, and select your choice".Service and Support. You can contact Fujitsu Service and Support in the following ways. Before you place the call, you should have the following information ready so that the customerPurchase date. Conditions under which the problem occurred. Any error messages that have occurred. Type of device connected, if any. Fujitsu Shopping Online. You can go directly to the online by going to the website at www.shopfujitsu.com.Your LifeBook P1620 notebook is backed by a Fujitsu International Limited Warranty. Check theGetting to Know Your LifeBook. Overview. This section describes theLifeBook P1620 notebook. WeFigure 1. Fujitsu LifeBook P1620 notebookConnectors and peripheral interfaces on the LifeBook P1620 notebook and the optional port replicatorSpecific locations are illustrated in Figures 2 through 6. TheConnection. Notebook. Icon. Purpose. DC in connectorSecure DigitalThe Secure Digital SD card slot allows you to install a flash memory cardUSB Ports. Connect Universal Serial Bus 2.0 or 1.1 compliant devices to theInsert Type I or Type II PC Cards. Fingerprint Sensor. Use the fingerprint sensor to log onto the system using your fingerprint asMicrophone Jack. Connect an external microphone. The internal microphone is disabledThe same icon is used for theNotebook. Headphone Jack. Connect stereo headphones or powered external speakers. The internalModem. Connect a telephone line to the internal modem using a standard RJ11Security lock slot. The security slot allows you to secure the notebook using compatibleLocal Area. Network LAN. Ethernet to a Local Area Network LAN in your office or home, orBattery Release. Latch.

The battery release latch allows you to remove the battery from your Switch. The wireless LAN switch allows you to turn power to the optional wireless LAN device on and off. Builtin Microphone. Display Panel. Application Panel Buttons. Speaker. Resume Button. Quick Point. Pointing Device. Status Indicator Panel. Keyboard. Figure 2. LifeBook notebook with display open. The following is a brief description of your LifeBook notebook's front and display features. Display Panel Latch. The display panel latch holds the display panel in position. The display panel is a color LCD panel with back lighting for the display of text and graphics and touch. Status Indicator Panel. The Status Indicator Panel displays symbols that correspond to specific components of your LifeBook. P1600 Series notebook. See "Status Indicator Panel" on page 29. A fullfunction keyboard with dedicated Windows keys. See "Keyboard" on page 37. Quick Point Pointing Device. The Quick Point pointing device consists of two mouselike buttons, one scroll button, and a cursor. See "" on page 46. The speaker allows you to listen to sound from your system. Fingerprint Sensor. The fingerprint recognition sensor allows you to log into Windows or other applications by replacing your See "Appendix B Fingerprint Sensor Device" on page 173. Builtin Microphone. The builtin microphone allows you to input mono audio. PC Card Slot. PC Card Eject Button. Figure 3. LifeBook notebook leftside panel. LeftSide Panel Components. The following is a brief description of your LifeBook notebook's leftside components. See "Activating the WLAN Device" on page 164. PC Card Slot. The PC Card Slot allows you to install a Type I or Type II PC Card. See "PC Cards" on page 85. The PC Card eject button is used for removing a PC Card from the slot. Headphone Jack. Microphone Jack. USB 2.0 Ports. DC Power Jack. Figure 4. LifeBook notebook rightside panel. RightSide Panel Components.

The following is a brief description of your LifeBook notebook's rightside components. SD Card Slot. The Secure Digital SD card slot allows you to insert a flash memory card for data storage. Flash memory. Headphone Jack. The headphone jack allows you to connect stereo headphones or powered external speakers. See Microphone Jack. The microphone jack allows you to connect an external mono microphone. See "Microphone Jack" on USB 2.0 Ports. The two USB 2.0 ports allow you to connect Universal Serial Bus devices. USB 2.0 transfers data at up to See "Universal Serial Bus Ports" on page 92. The pen is used as the interface with the digitizer display. LAN RJ45 Jack. AntiTheft. Lock Slot. Air Vents. External Video Port behind cover. Figure 5. LifeBook notebook back panel. Back Panel Components. Following is a brief description of your LifeBook notebook's back panel components. External Video Port. The external video port allows you to connect an external monitor or LCD projector. Note that when the Replicator rather than the port on the system. See "External Video Port" on page 93. LAN RJ45 Port. See "Internal LAN The Modem RJ11 telephone port is for attaching a telephone line to the internal multinational 56K. The antitheft lock slot allows you to attach a optional physical lockdown device. The air vents allow proper air circulation to ensure that the system does not overheat. Lithium ion Battery. Memory Upgrade Compartment. Main Unit and. Configuration Label. Port Replicator Connector. Figure 6. LifeBook notebook bottom panel. Bottom Components. The following is a brief description of your LifeBook notebook's bottom panel components. Battery Latches. The battery latches are used to secure the Lithium ion battery in the battery bay. Lithium ion Battery Bay. The battery compartment contains the Lithium ion battery.

<http://www.drupalitalia.org/node/71581>